

# dekorafence®

*The best choice for your garden...*



**GARDEN CONCEALMENT  
SYSTEMS**

**ALUMINUM FENCE  
SYSTEMS**

**SINGLE / DOUBLE WIRE  
FENCE**

**GRASS FENCE**

**PVC DECORATIVE  
STEPPING STONES**

**GRASS LIMITER**

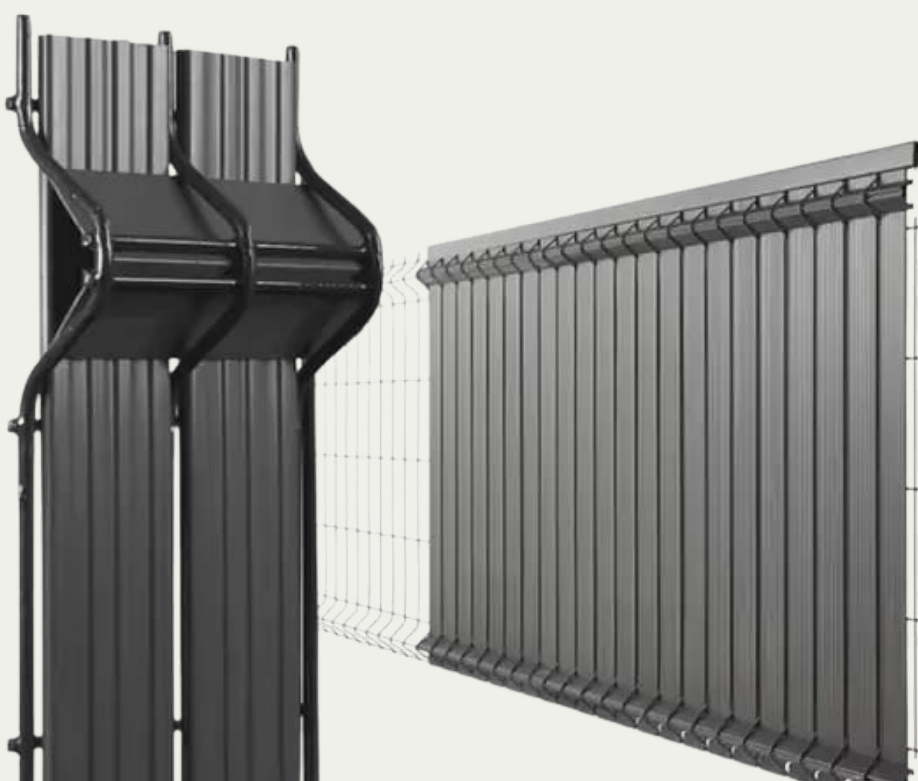
**PEBBLE HOLDER GRID**

# GARDEN CONCEALMENT SYSTEMS



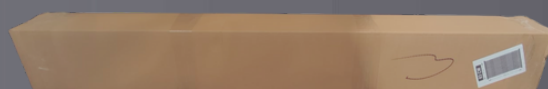
Garden Closure Systems become indispensable for your backyards, homes and factories with their stylish and unique structure, easy installation and durability.

It is an innovative product that provides an aesthetic, functional solution for people who want to protect their privacy in gardens or areas closed with panel fences.



Annex-1 (Crate-Palletizing)

The products are boxed as in the image in Annex-2, placed in crates as in the image in Annex-1 and Annex-3, and are ready for transportation.



Annex-2 (Box)



Annex-3 (Crate-Palletization)

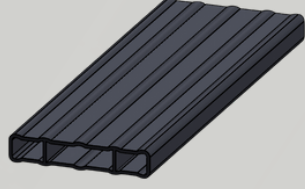


# STRAIGHT MODEL

## TECHNICAL DETAILS

### COLOUR

- RAL 7016 Anthracite Gray
- RAL 6005 Green

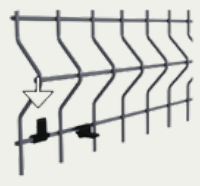


### FLAT PROFILE WIDTH

42,5mm / 49,5mm

### HEIGHT

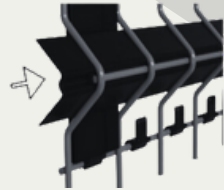
0,63m / 0,83m / 1,03m / 1,23m / 1,53m / 1,73m / 1,93m / 2,03m / ( $\infty$ )



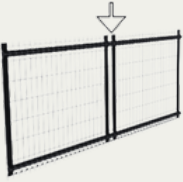
1.STEP



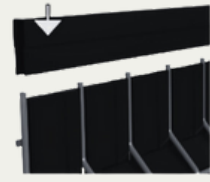
2.STEP



3.STEP



4.STEP



5.STEP

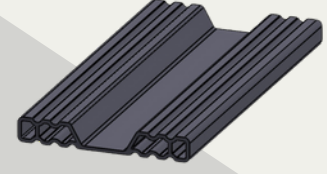
First, the lower nails are attached to the wire, then the vertical flat profiles are placed on the wire, and then the intermediate support profile is placed horizontally on the wire. Then, vertical profiles are placed on the wire as shown in the 4th image. After all the parts are assembled, the top cover is attached to the wire.

# CORRUGATED MODEL

## TECHNICAL DETAILS

### COLOUR

- RAL 7016 Anthracite Gray
- RAL 6005 Green



### CUTTERED PROFILE WIDTH

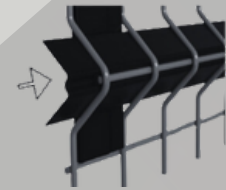
49,5mm

### HEIGHT

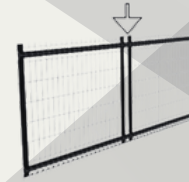
0,63m / 0,83m / 1,03m / 1,23m / 1,53m / 1,73m / 1,93m / 2,03m / ( $\infty$ )



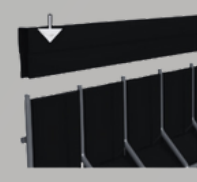
1.STEP



2.STEP



3. STEP



4.STEP

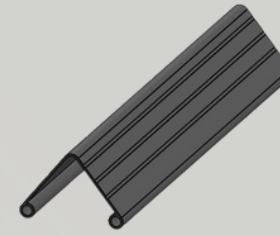
First, vertical channel profiles are attached to the wire, then horizontal support profiles are attached to the wire horizontally. Afterwards, vertical channel profiles are attached to the wire as shown in step 3. After all the parts are assembled, the top cover is attached to the wire.

# 3D CORNER MODEL

## TECHNICAL DETAILS

### COLOUR

- RAL 7016 Anthracite Gray
- RAL 6005 Green



### 3D CORNER PROFILE WIDTH

49,5mm

### HEIGHT

0,63m / 0,83m / 1,03m / 1,23m / 1,53m / 1,73m / 1,93m / 2,03m / ( $\infty$ )

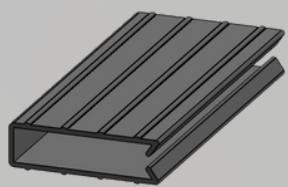


All vertical 3D corner profiles are placed in the wire gaps in one step. (This product does not include top cover and intermediate support profiles.)

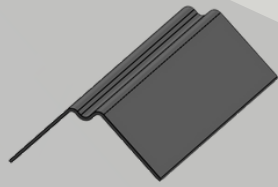
## FLAT MODEL

## CORRUGATED MODEL

## 3D CORNER MODEL



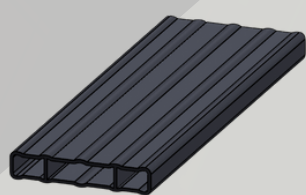
Top cover



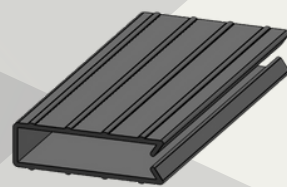
Intermediate Support Profiles



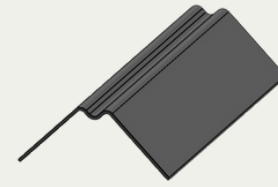
Lower Nail



Vertical Straight Profiles



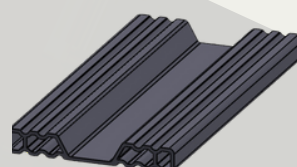
Top cover



Intermediate Support Profiles



Lower Nail



Vertical Corrugated Profiles



Vertical Corner(V) Profiles

# DOUBLE CANVAS SERIES



It protects the tarpaulins used in Double Panel Fence applications from wind, dust and foreign eyes.

It is an innovative product that provides an aesthetic, functional solution for people who want to protect their privacy in gardens or areas closed with double doors.



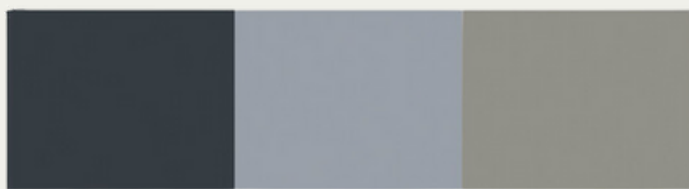
## TECHNICAL SPECIFICATIONS

- UV Protected PolyPropylene(PP)
- Colour options
- flexible structure



## TECHNICAL DETAILS

### COLOUR



RAL 7016

RAL 7040

RAL 7030

RAL 9010



RAL 6005

### ESNEK YAPI



### METHOD OF APPLICATION



### PRODUCT SIZES



### THICKNESS

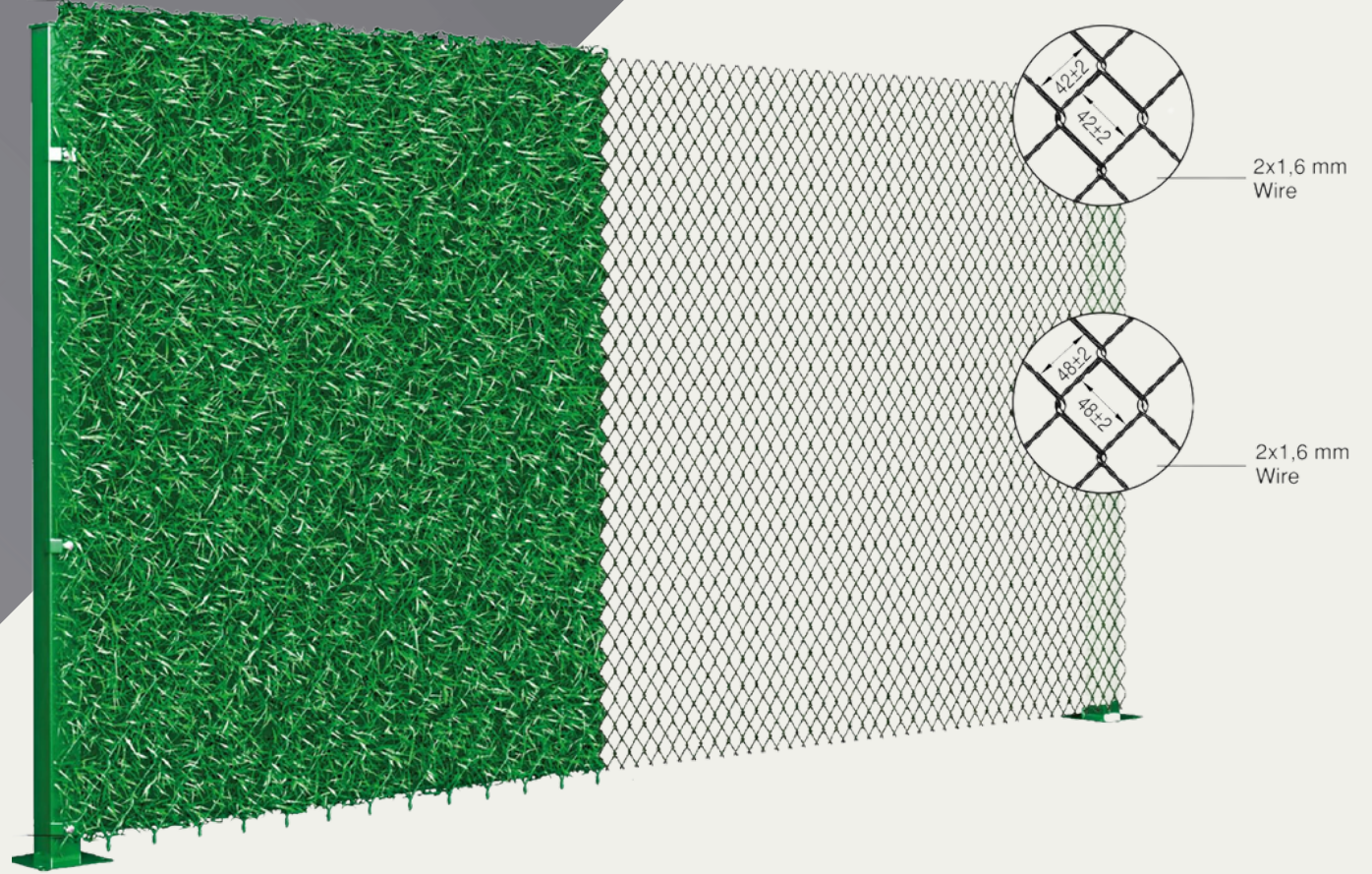
**1,1mm**  
mm

# GRASS FENCE



## Product Usage Areas:

- On earthen floors
- In walled structures
- On concrete floors
- On grassy grounds
- In children's playgrounds
- In garage areas
- In structures such as gardens, fields and lands



## TECHNICAL SPECIFICATIONS

- UV Protected PVC
- Colour options
- Flexible structure



## COLOUR



RAL 6005 Green

## WIRE THICKNESS

1,6mm

## HEIGHT

0,50m / 0,75m / 1m / 1,20m / 1,50m / 1,75m / 2,03m

## LENGTH

10m



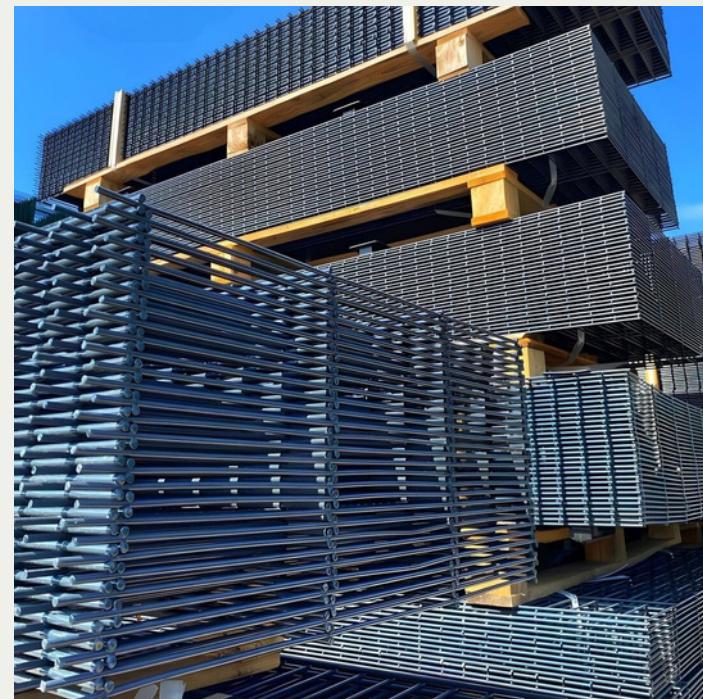
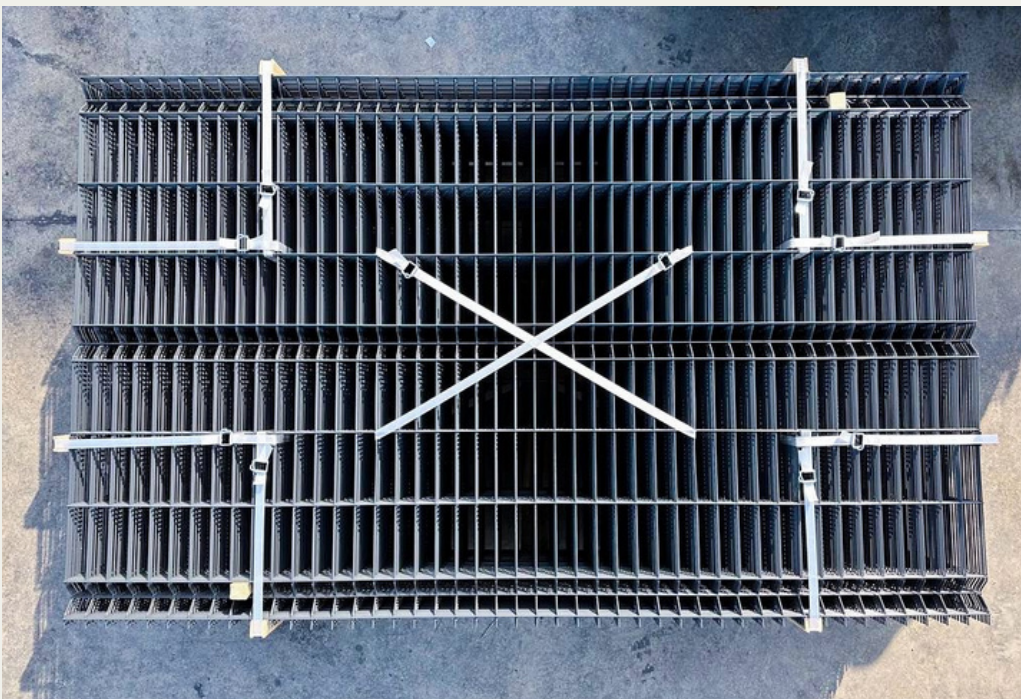
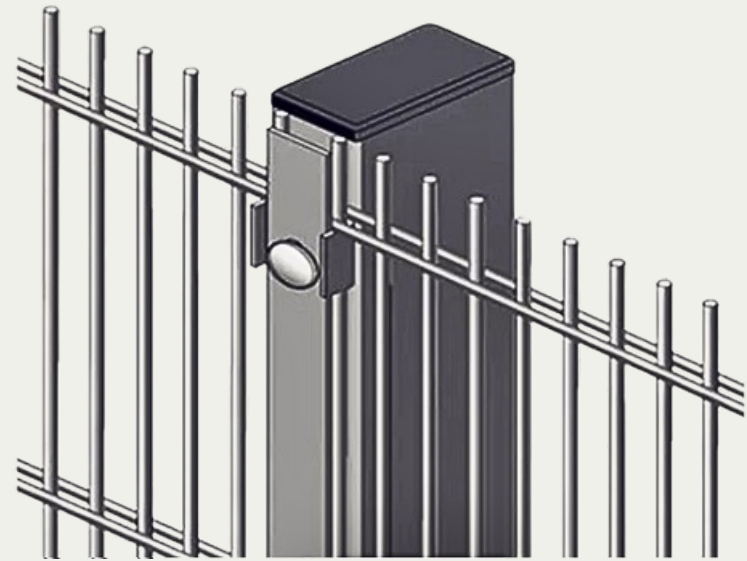
# SINGLE / DOUBLE WIRE FENCE



Our fences are welded with galvanized wire and coated with electrostatic powder paint.

Product Usage Areas:

- On earthen floors
- In walled structures
- On concrete floors
- On grassy grounds
- In children's playgrounds
- In garage areas
- In structures such as gardens, fields and lands



# SINGLE WIRE FENCE TECHNICAL DETAILS

## COLOUR



RAL 7016 Anthracite Gray



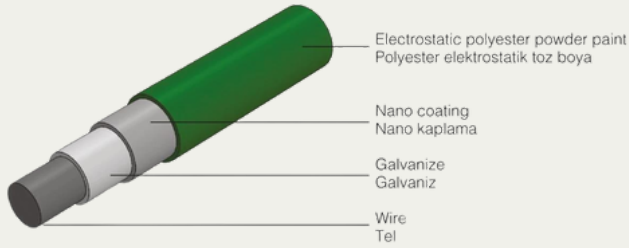
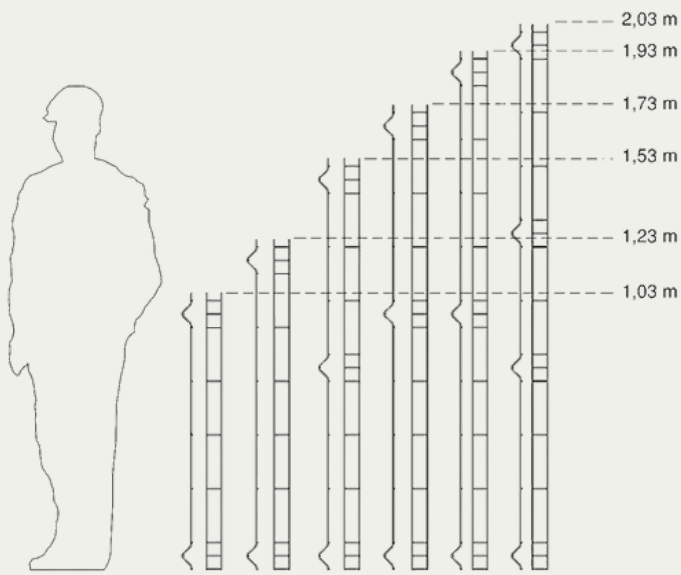
RAL 6005 Green

## WIRE THICKNESS

4mm / 4,5mm

## HEIGHT

0,63m / 0,83m / 1,03m / 1,23m / 1,53m / 1,73m / 1,93m / 2,03m



# DOUBLE WIRE FENCE TECHNICAL DETAILS

## COLOUR



RAL 7016 Anthracite Gray



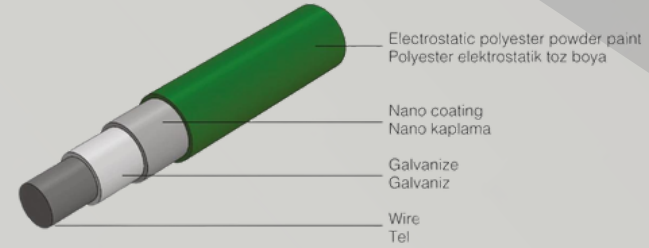
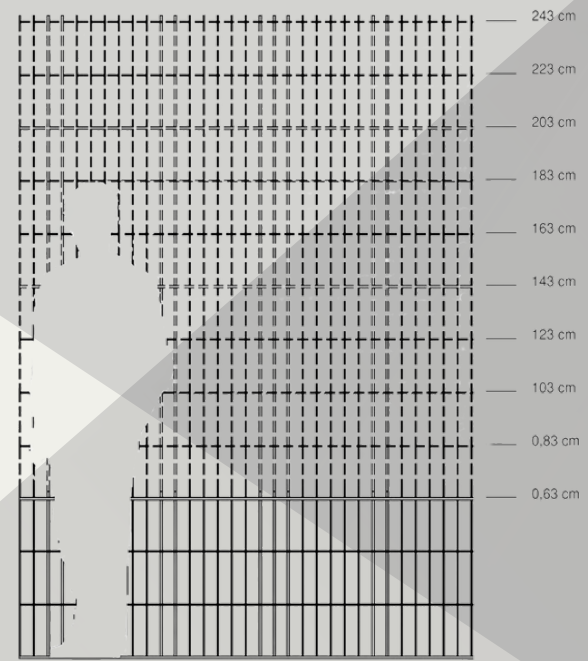
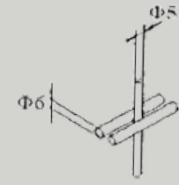
RAL 6005 Green

## WIRE THICKNESS

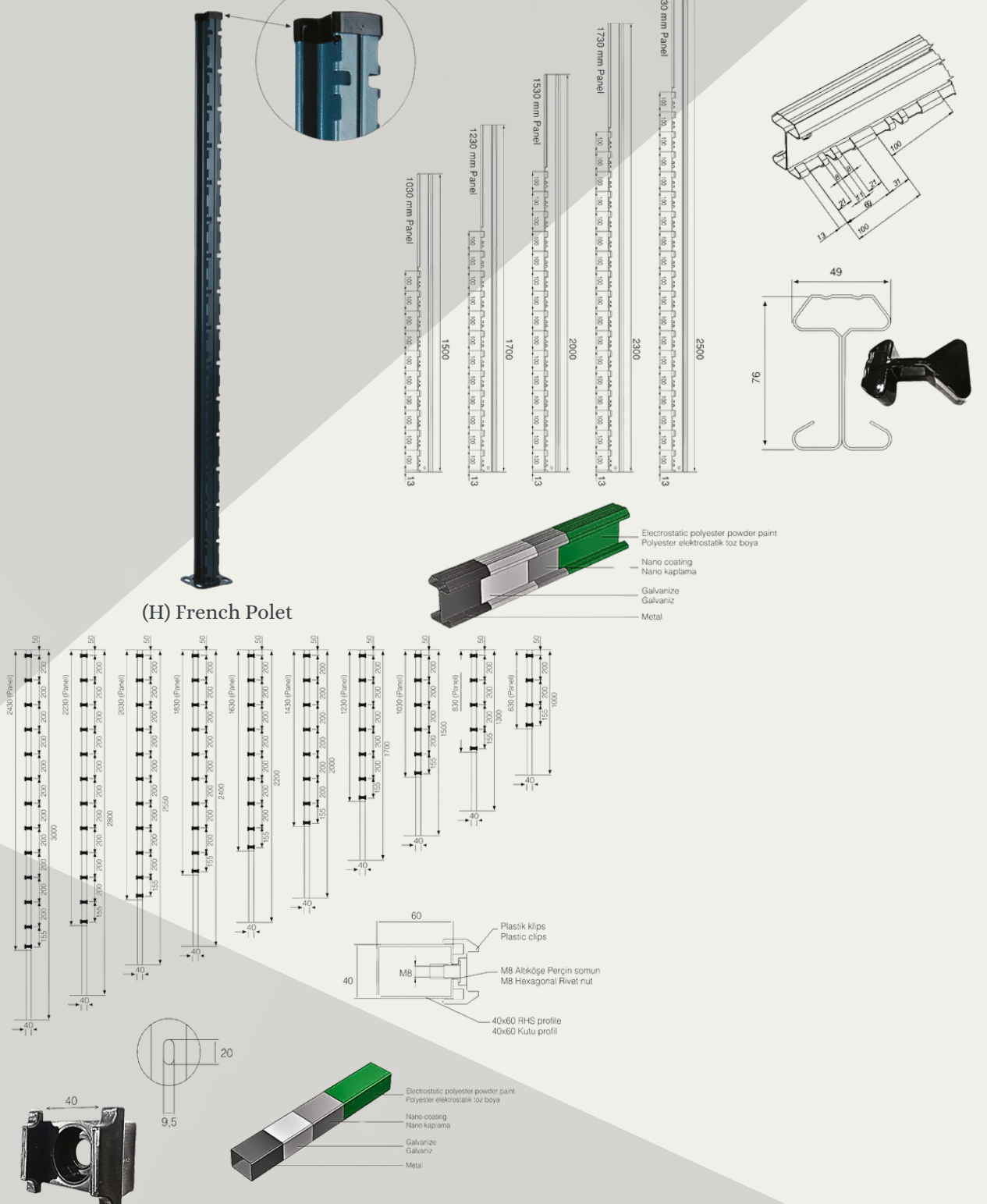
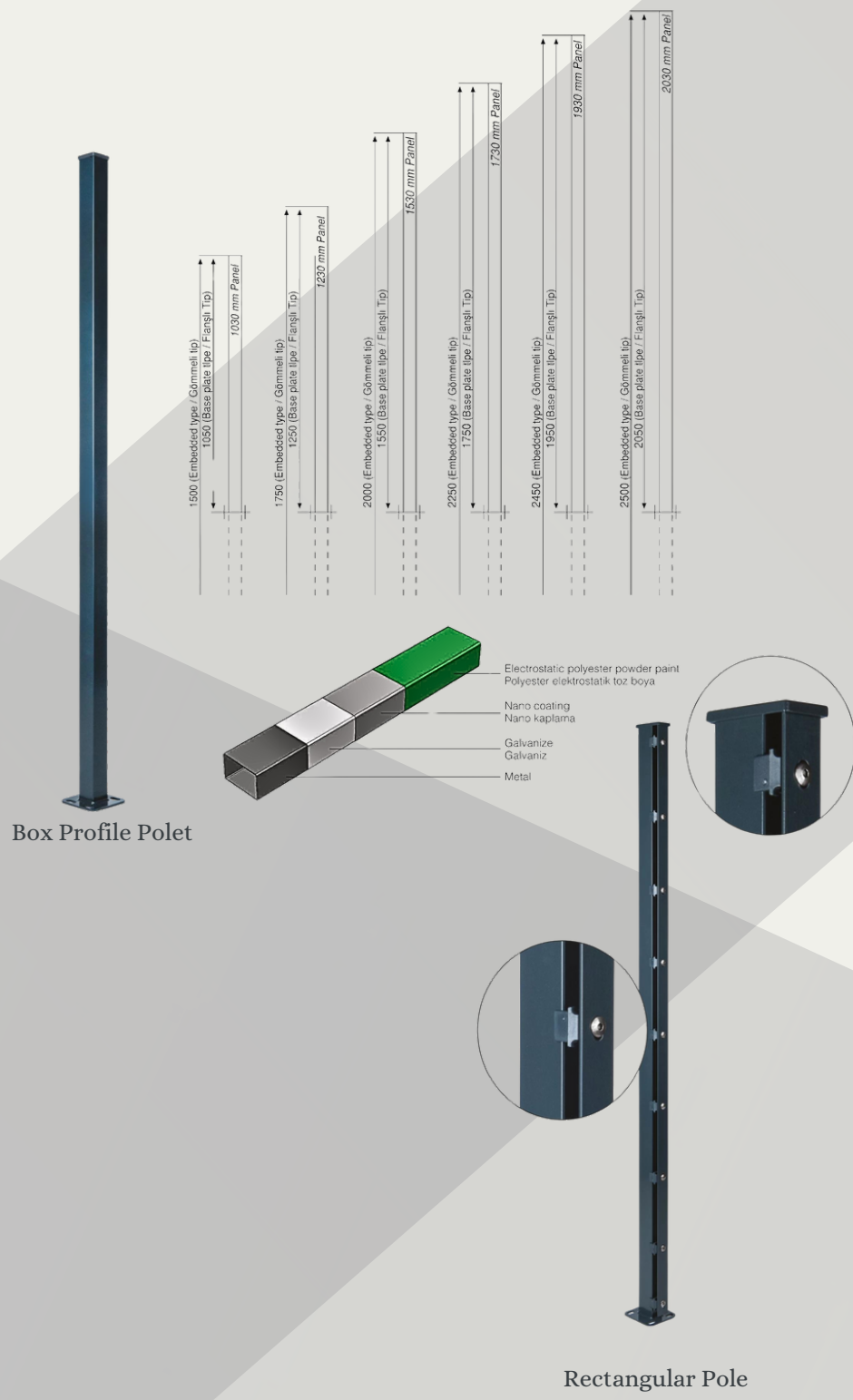
5mm \* 6mm

## HEIGHT

0,63m / 0,83m / 1,03m / 1,23m / 1,53m / 1,73m / 1,93m / 2,03m



# DİREKLER



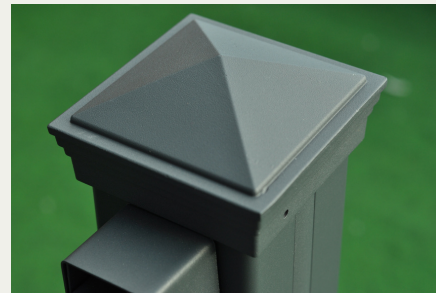
# ALUMINUM FENCE SYSTEMS



Aluminum garden fences are made of aluminum metal, which is resistant to rust and corrosion. This makes it an excellent option for outdoor applications.

Aluminum is known for its longevity. You don't have to worry about rust, shrinkage, or rot, making them suitable for a variety of weather conditions like rain, snow, and UV exposure.

They offer a balance between durability, low maintenance and design flexibility.







# ALUMINUM CASTLE MODEL

## TECHNICAL DETAILS

### COLOUR

-  RAL 7016 Anthracite Gray
-  RAL 9010 White

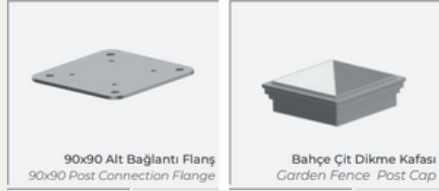
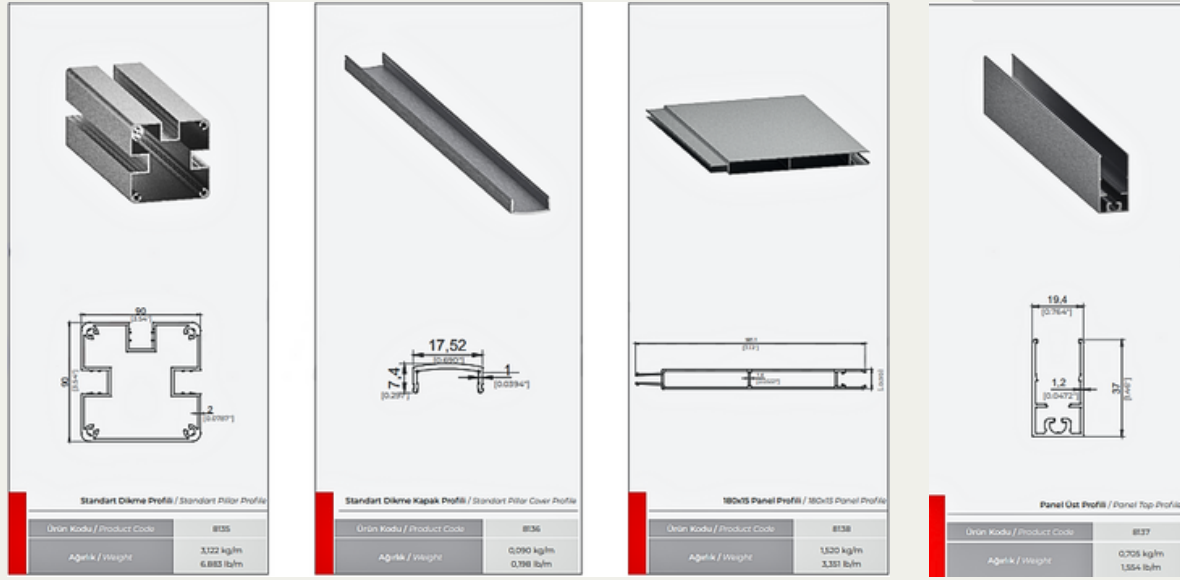


### FLAT PROFILE WIDTH

180mm

### HEIGHT



0,50m / 0,80m / 1m / 1,20m / 1,50m / 1,80m / 2m



# ALUMINUM VINTAGE MODEL

## TECHNICAL DETAILS

### COLOUR

-  RAL 7016 Anthracite Gray
-  RAL 9010 White

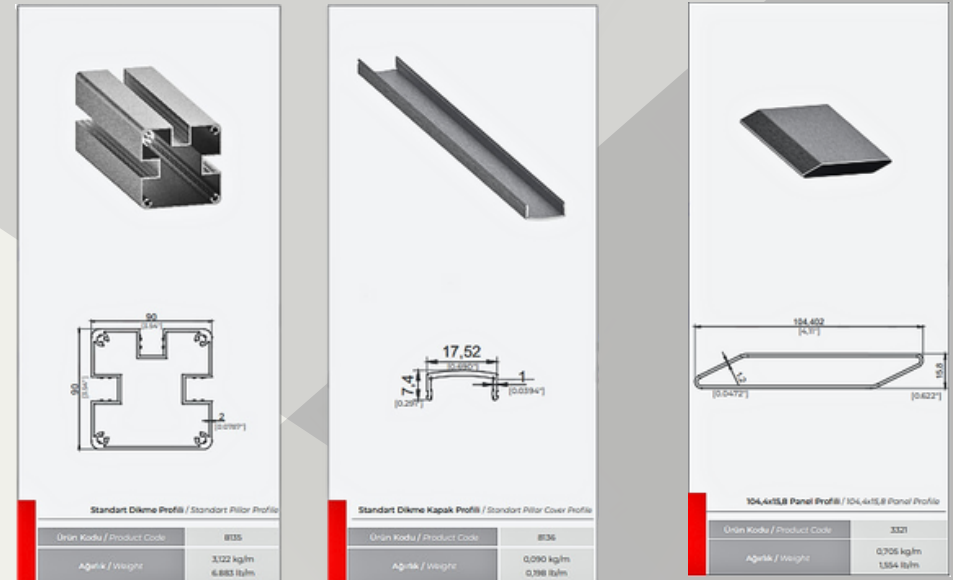


### HALF ANGLE PROFILE WIDTH

104,4mm

### HEIGHT



0,50m / 0,80m / 1m / 1,20m / 1,50m / 1,80m / 2m



# ALUMINUM JUKE MODEL

## TECHNICAL DETAILS

### COLOUR

-  RAL 7016 Anthracite Gray
-  RAL 9010 White

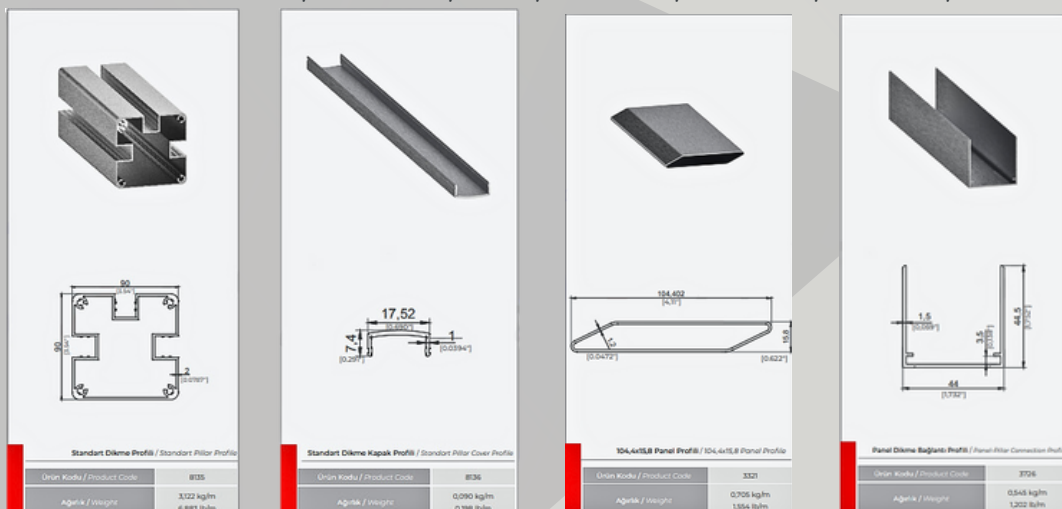


### HALF ANGLE PROFILE WIDTH

104,4mm

### HEIGHT



0,50m / 0,80m / 1m / 1,20m / 1,50m / 1,80m / 2m



# ALUMINUM ANGEL MODEL

## TECHNICAL DETAILS

### COLOUR

-  RAL 7016 Anthracite Gray
-  RAL 9010 White

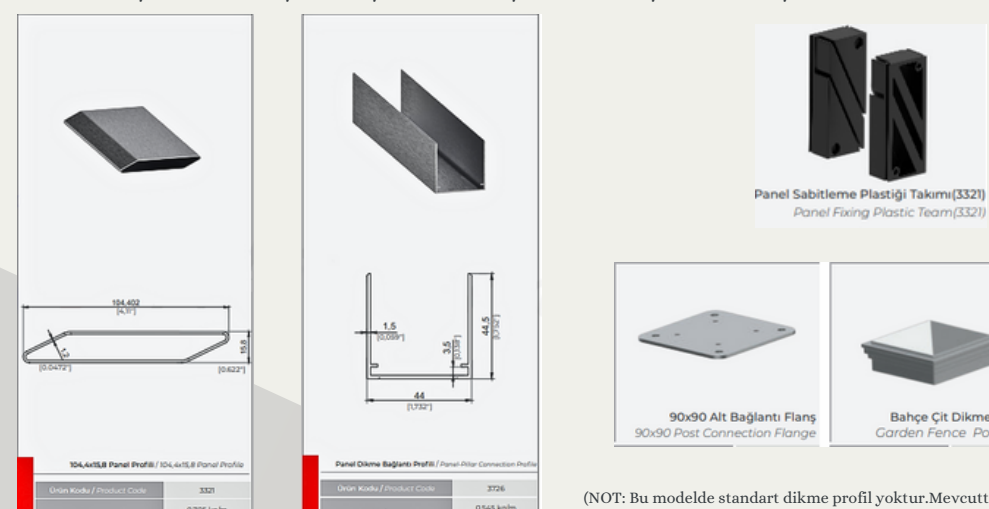


### HALF ANGLE PROFILE WIDTH

104,4mm

### HEIGHT

0,50m / 0,80m / 1m / 1,20m / 1,50m / 1,80m / 2m



(NOT: Bu modelde standart dikme profil yoktur.Mevcutta bulunan profil direklerinize monte edilir.)

# PVC STEPTING STONE



Add a different style to your garden with Decorative Stepping Stones. Let your garden reach elegance and harmony with stepping stones.

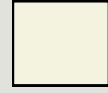
Each decorative stone is made of moblen, resistant to all weather conditions. Ground stakes are made using plastic.

Each ground stake is 5cm tall. Each decorative stepping stone includes four plastic ground stakes. Each decorative paving stone weighs only 0.63 kg.

## TECHNICAL SPECIFICATIONS

- UV Protected PP Moblen
- Colour options
- Solid Structure

## COLOUR



RAL 9001 Beige

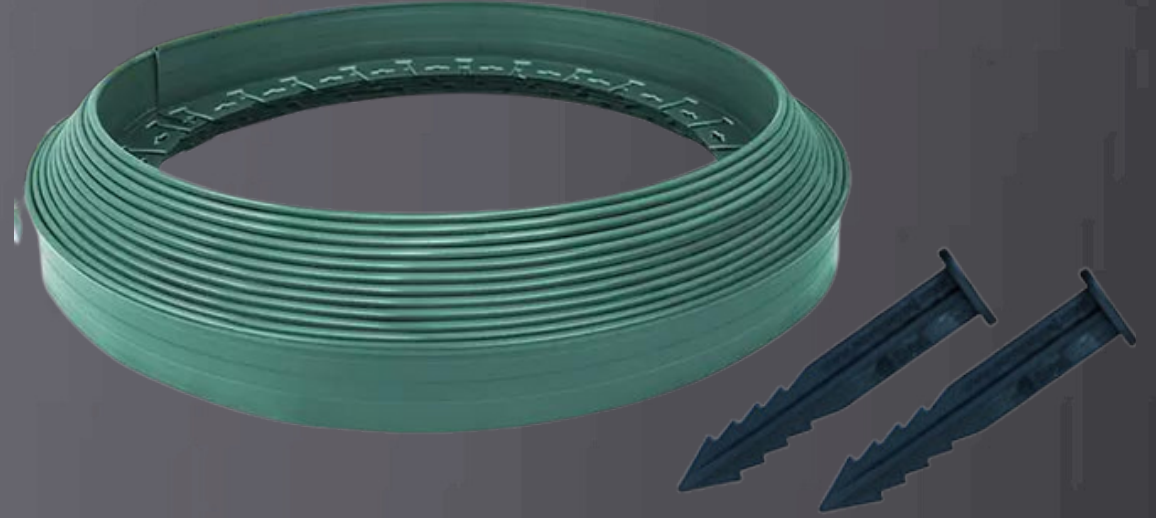


RAL 7016 Anthracite Gray

**Product Dimensions** 40cm\*40cm (Each ground stake is 5cm tall.)

# FLEXIBLE GRASS LIMITER

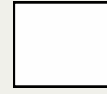
Flexible plastic grass limiter is a flexible lawn and garden border product used to separate your lawn areas and plant bed areas. It creates a clear and clean look by emphasizing the lines around your plant beds. You can control the random growth of the grass surface in your garden and its movement towards houses and buildings.



## TECHNICAL SPECIFICATIONS

- 25 meters length
- 1st class plastic raw material
- Easy and practical application

## COLOUR



RAL 9010 White



RAL 7016 Anthracite Gray



RAL 8003 Brown

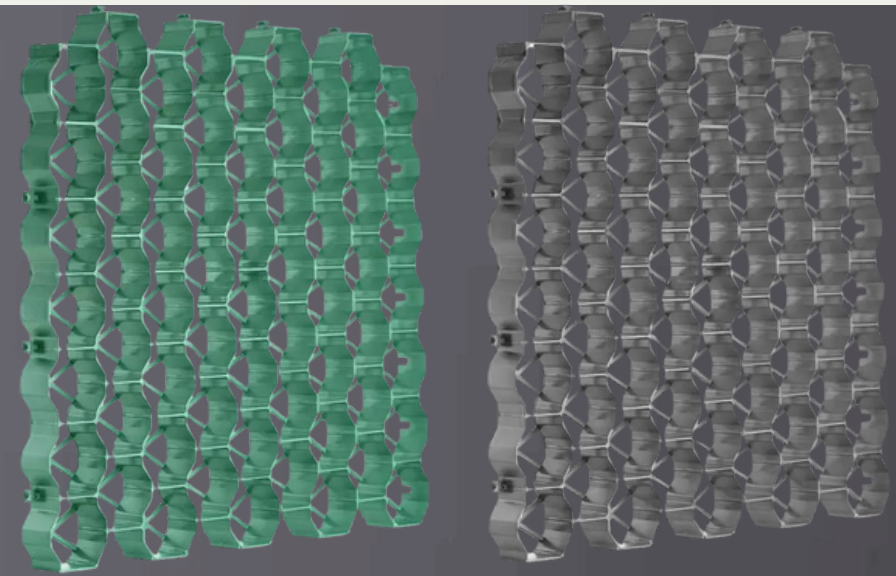


RAL 6005 Green

# PEBBLE HOLDER GRID

Plastic Pebble Retainer Grating is a grid system that makes pedestrian passages and vehicle paths durable. Plastic grilles are stronger than the products on the market and have a height of 4 cm.

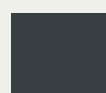
The product, designed with an octagonal honeycomb structure, provides maximum strength in the distribution of pressures. Thanks to its cellular structure, it is suitable for the use of different types of filling materials. In gravel applications, there are base strips to prevent the gravel from dispersing and being buried. The product is produced from first-class PP recyclable material and has different color options.



## RENK



RAL 9010 White

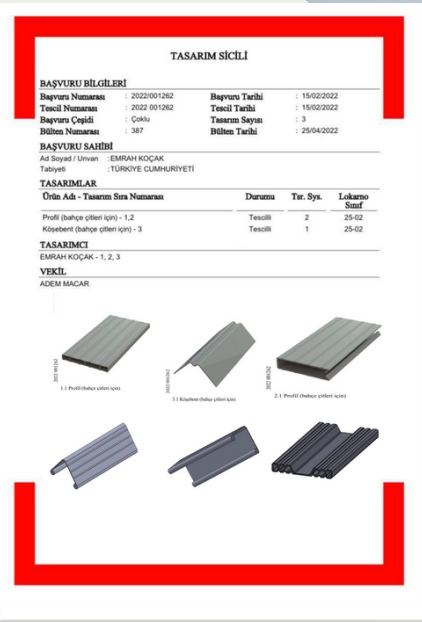
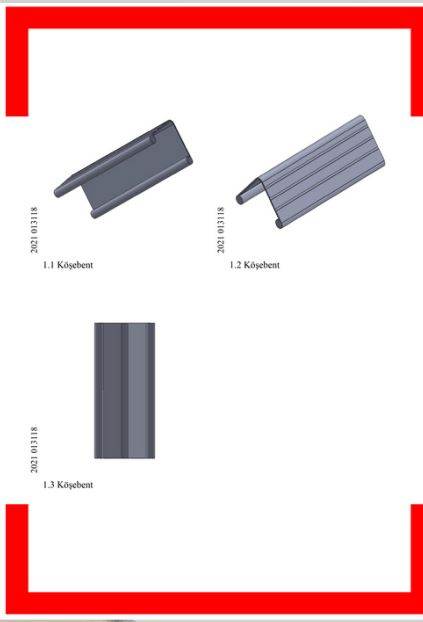
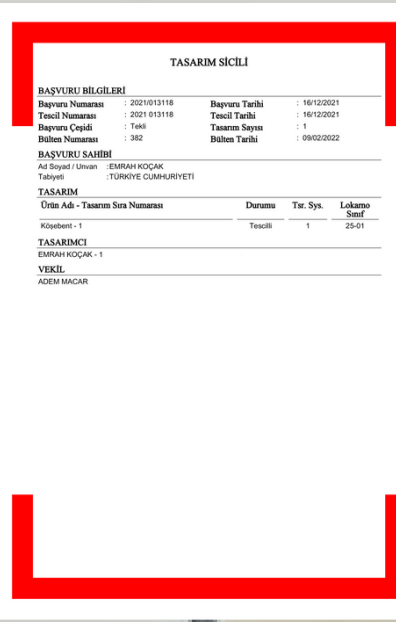


RAL 7016 Anthracite

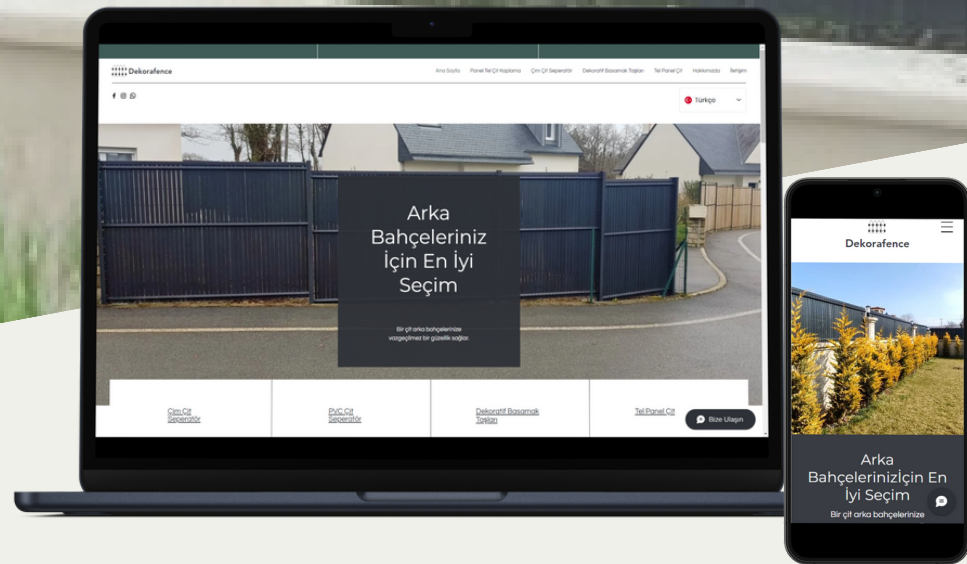
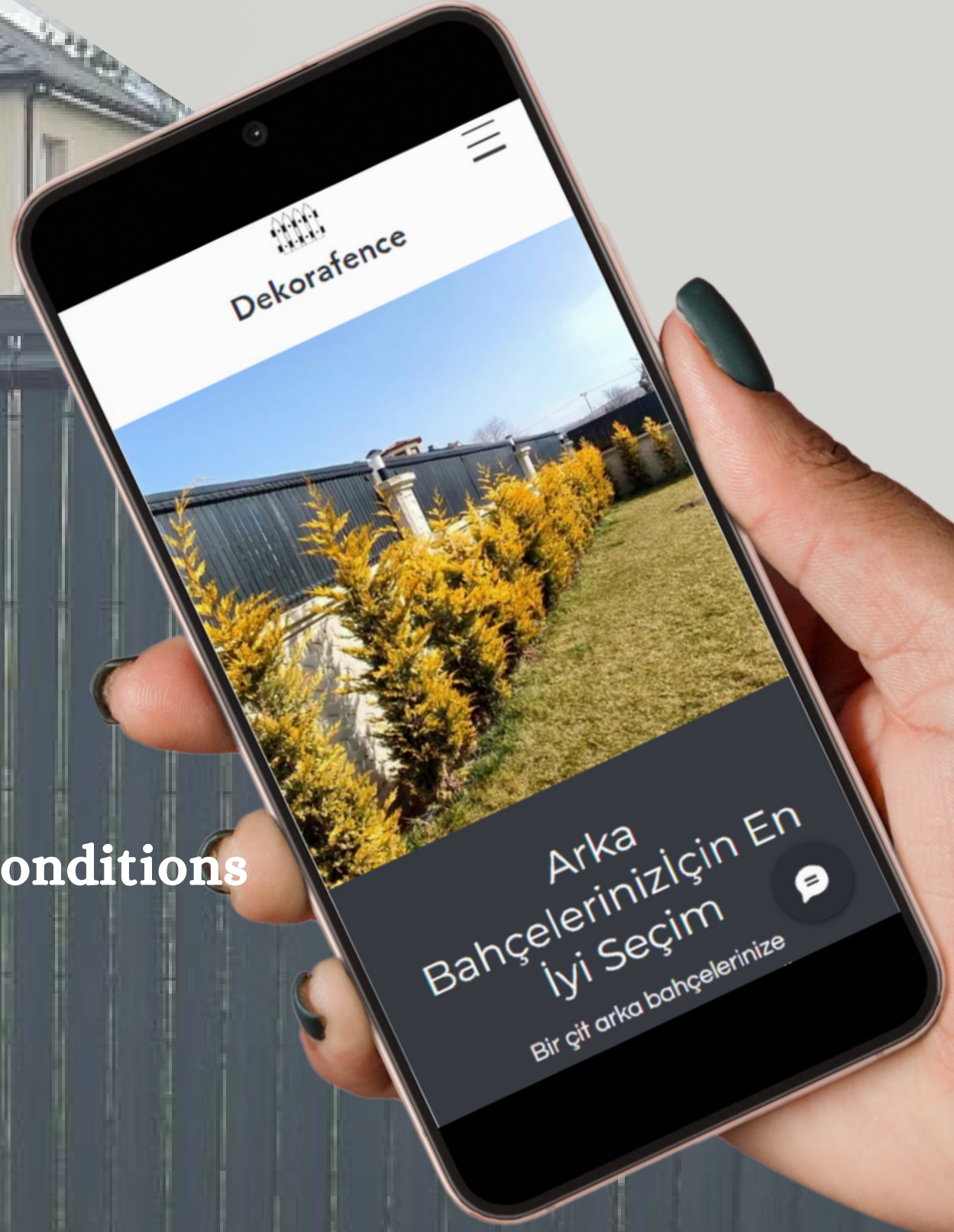


RAL 6005 Green





- ✓ Resistant
- ✓ Antioxidant
- ✓ 100% Eco-Friendly
- ✓ Resistant to environmental conditions
- ✓ 10 YEAR WARRANTY!
- ✓ Recycleable

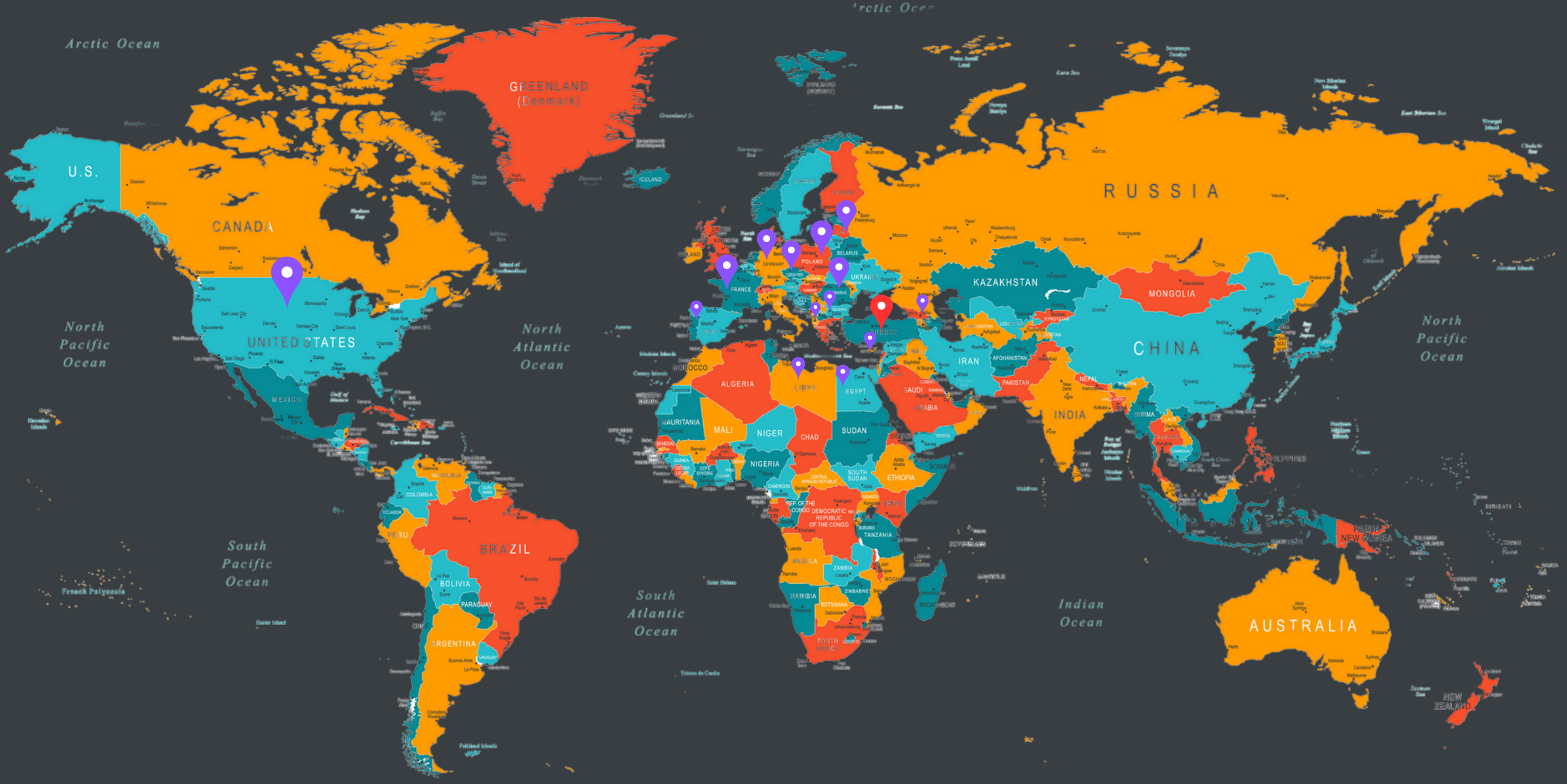


CONTACT

WWW.DEKORAFENCE.COM

# dekorafence®

## Which countries are we in?



### Our references



Dekorafence Plastik Sanayi Ticaret Limited Şirketi

Telefon : +90 532 419 62 02 / +90 532 379 90 19 / +90 532 782 02 20

info@dekorafence.com  
export@dekorafence.com

www.dekorafence.com

